

# Suction & Irrigation

MACQUARIE MEDICAL SYSTEMS  
CATALOGUE VERSION 11



## Catheter

Metal Catheter 3

## Dental Syringes

Intra Ligamental Stainless Steel 5

Self Aspirating Black Handle 5

Standard Folding 5

## Ear Syringes

Spare parts 4

Syringe, two nozzles & shield 100ml 4

Syringe, two nozzles & shield 150ml 4

## Suction Tips

Frazier 3

Poole 3

Yankauer 3

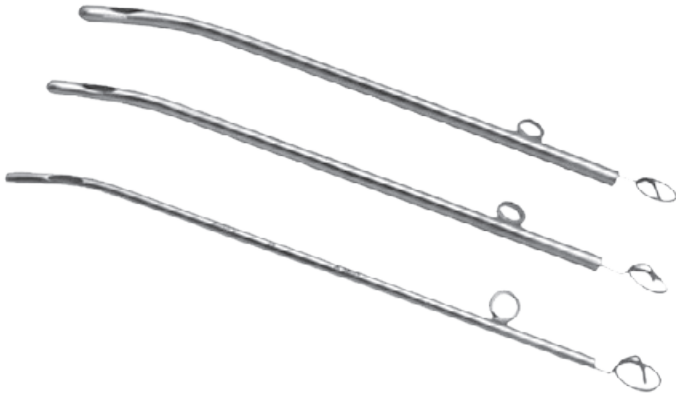


# FOUR CHOICES OF QUALITY

Our selection of HIPPI, KLINI, ARMO, and SAYCO instruments offer unparalleled flexibility, quality and value. Our multi-tiered instrument quality selection recognises and meets a variety of clinical needs and budgets.

 <p><b>ANTON HIPPI</b> Instruments &amp; Implants</p>	<p><b>THEATRE (GERMANY)</b></p> <p>Our state of the art range of "Theatre Quality" Instruments. All Hipp instruments are manufactured to exacting standards at the fully accredited Anton Hipp GMBH facility located in southern Germany. Crafted from the finest German stainless steel forgings for the utmost reliability, durability, consistency and precision. Incorporating the very latest technological innovations, most of these instruments are available with Tungsten Carbide inserts for added precision and lifespan.</p>
 <p><b>KLINI™</b> instruments by anton hipp GERMANY</p>	<p><b>GERMANY</b></p> <p>Our new range of German theatre quality medical instruments. KLINI instruments are manufactured for us under licence by Anton Hipp. The HIPPI name is synonymous with quality that has been proven time and time again with over 40 years experience in the medical instrument industry. Our new KLINI range offers German quality at a competitive price.</p>
 <p><b>ARMO</b> surgical instruments</p>	<p><b>SUPERIOR</b></p> <p>The workhorse of our three quality ranges. This accredited range was borne out of the need for high quality dependable instrumentation in today's cost-sensitive environment. ARMO Instruments are crafted from the finest quality forgings and made to our specification in state of the art fully accredited manufacturing facilities in Pakistan. Most ARMO instruments are available in a smooth satin low reflective finish.</p>
 <p><b>Sayco</b> first aid instruments</p>	<p><b>WARD</b></p> <p>Our standard "Ward Quality" line. Economically priced and highly popular. This range is intended for use in applications where surgical precision is not the primary selection criterion.</p>

## Catheter



### METAL CATHETER

Metal Catheters are used to drain urine from the bladder.

	HIPP	KLINI	ARMO
14 French Gauge			A3857
12 French Gauge			A3856
10 French Gauge			A3855

## Suction Tips



### POOLE

Poole Suction Tips are used to remove large quantities of fluid from surgical sites during a procedure. The suction tube has multiple holes to prevent blockages caused by fat or tissue suctioned during a procedure.

	HIPP	KLINI	ARMO
ø 10mm			A4999



### YANKAUER

Yankauer Suction Tips are used to remove large quantities of fluid from surgical sites during a procedure. The suction tube has a single hole at the end of the tube.

	HIPP	KLINI	ARMO
Paediatric			A4990
Adult			A4991



### FRAZIER

Frazier Suction Tubes are used for removing fluid and debris from confined surgical sites. Suction is controlled by a small hole on the handle.

	HIPP	KLINI	ARMO
size 6			A5003
size 8			A5000
size 10			A5001
size 12			A5002



## Ear Syringes

### SYRINGE, TWO NOZZLES & SHIELD

Ear Syringes are used to irrigate the ear to assist in the process of ear wax removal. They are supplied with two nozzles and a shield.

	HIPP	KLINI	ARMO
100ml			A2010



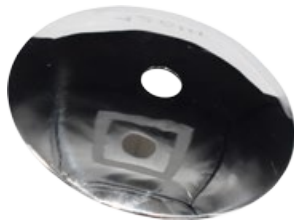
### SYRINGE, TWO NOZZLES & SHIELD

Ear Syringes are used to irrigate the ear to assist in the process of ear wax removal. They are supplied with two nozzles and a shield.

	HIPP	KLINI	ARMO
150ml			A2011



Nozzle Set



Shield



O ring for nozzle

### SPARE PARTS

	HIPP	KLINI	ARMO
Nozzle Set			A2013
Shield			A2014
O ring for nozzle			A2015
O ring for plunger			A2012

## Dental Syringes



### STANDARD FOLDING

A dental syringe is used for the injection of an anaesthetic, specifically in dentistry. It is a breech loaded syringe that accommodates a sealed cartridge containing the anaesthetic.

	HIPP	KLINI	ARMO
1.8ml			A2021
2.2ml			A2022



### SELF ASPIRATING BLACK HANDLE

A dental syringe is used for the injection of an anaesthetic, specifically in dentistry. It is a breech loaded syringe that accommodates a sealed cartridge containing the anaesthetic.

	HIPP	KLINI	ARMO
1.8ml			A2023
2.2ml			A2024



### INTRA LIGAMENTAL STAINLESS STEEL

A dental syringe is used for the injection of an anaesthetic, specifically in dentistry. It is a breech loaded syringe that accommodates a sealed cartridge containing the anaesthetic.

	HIPP	KLINI	ARMO
1.8ml			A2025
2.2ml			A2026



301 Catherine St,  
Leichhardt NSW 2040

Phone: (02) 9692 7921  
[www.macquariemed.com.au](http://www.macquariemed.com.au)